



## Mana Madness 10km Event Information

**Date:** Sunday 27<sup>th</sup> July 2014  
**Venue:** Porirua Harbour, Onepoto Rowing Club  
**Entry Info:** Enter Online at [www.canoeracing.org.nz](http://www.canoeracing.org.nz) or on the day (please bring the entry form from the website) see below.

### Race Categories

There will be 12 race categories that will be raced in 4 separate races.

Race No	Age group	Boat type	Distance & (Laps)
1 (9am)	Tyro – Men & Women (Primary and Intermediate age paddlers)	Any boat except K1	2km (2)
1 (9am)	Novice - Beginner paddlers of any age, generally have not raced before	Any Boat	2km (2)
2 (9.30am)	14 & Under Men	K1 & TK1	4km (2)
2 (9.30am)	14 & Under Women	K1 & TK1	4km (2)
2 (9.30am)	16 & Under Men	K1	6km (3)
2 (9.30am)	16 & Under Women	K1	6km (3)
3 (10am)	18 & Under Men	K1	10km (5)
3 (10am)	18 & Under Women	K1	10km (5)
3 (10am)	Open Men	K1	10km (5)
3 (10am)	Open Women	K1	10km (5)
3 (10am)	Recreational Men	Open to all boats including surf ski and waka	10km (5)
3 (10am)	Recreational Women	Open to all boats including surf ski and waka	10km (5)
4 (11am)	Open K2 (Only if entries permit)	K1	10km (5)

Ages are as 27<sup>th</sup> July 2014

### Race programme

8.00am Registration opens  
 8.45am Race briefing  
 9.00am Tyros & Novice paddlers (2km)  
 9.30am U14 & U16 (4km U14, 6km U16)  
 10.00am U18, Open, Masters, Recreational boats (10km)

## **Entry Process**

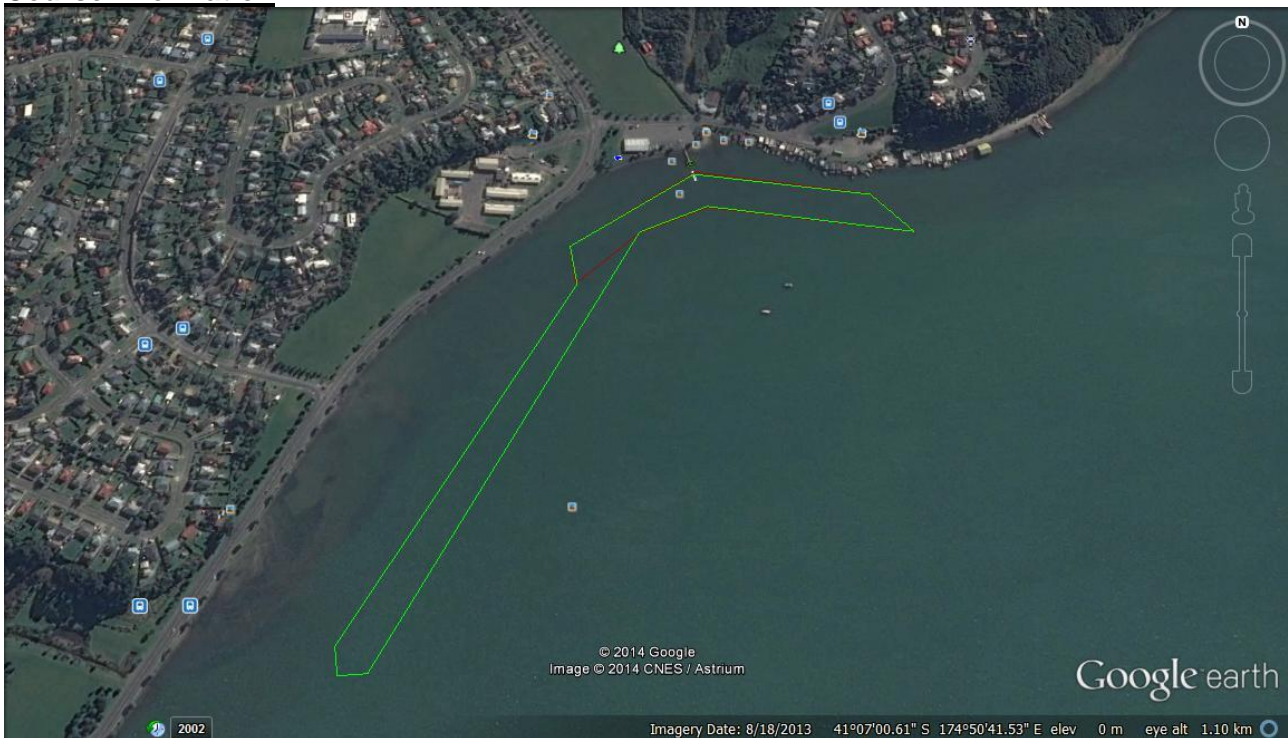
Entry fees must be paid before starting the race, the fees are as set below:

Open and Masters (over 18)	\$15
Under 18 years	\$10

Enter online via the Canoe Racing NZ website.

Entries will be taken on the day at registration, please complete and bring along the entry form that can be found on the CRNZ website. All entries will close at 9am.

## **Course Information**



Red – 1km Course

Race 1 - Tyro, Novice

Green – 2km Course

Race 2, 3 & 4 all other divisions

## **Rules and Race information**

There will be a race briefing at 8.45am and additionally just prior to each race. All paddlers must follow the instructions contained in the briefing.

Paddlers must complete the course as per the course set in the race brief.

All paddlers 14 and under must wear a PDF. The event manager reserves the right to make all paddlers wear PDF's if the conditions require. Please bring these to the event.

In the event of a capsize the paddler should put their hand up for assistance from the safety boat. The paddler may re-enter their boat and complete the race without penalty as long as there is no advantage gained.

All paddlers must have a number displayer on the front left of their boat, stickers will be supplied.

All paddlers must follow the instructions of the event manager or safety boat staff.

Boat will be checked for safety before the start of the race.